



Self-Propelled
Telescopic
Boom

S[™]-120/125

○ Industry-leading
outreach and
manoeuvrability.



Genie Industries

S-120/125

S-120

- S-120 has 38.6 m (126 ft) working height
- Industry-leading outreach of 22.9 m (75 ft)
- 340 kg (750 lb) lift capacity

S-125

- S-125 has 40.1 m (131 ft) working height
- Industry-leading outreach of 24.4 m (80 ft)
- 227 kg (500 lb) lift capacity

Standard Features

- Four-wheel drive with four-wheel brakes
- Four-wheel steer includes front, rear, crab and coordinated steer functions
- Extendable axles, operated from platform
- Three diesel engine options
- 2.44 m (8 ft) steel platform
- Fully proportional platform controls with ramp up/down feature

- Hydraulic platform rotation
- 360° continuous turntable rotation
- 12V DC auxiliary power
- Closed-loop hydrostatic drive
- Positive traction drive
- Drive enable system
- Self-leveling platform
- Onboard full diagnostics
- Anti-restart engine protection
- Auto engine fault shutdown
- Hydraulic oil cooler
- Engine monitoring display
- AC wiring to platform
- Foam-filled tyres
- Wire braided hose
- Tilt alarm
- Horn
- Hour meter

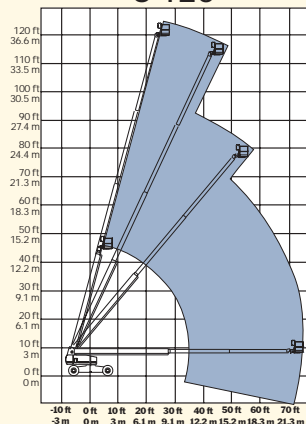
Options and Accessories

- Cold start packages
- 3500 watt AC generator
- Platform swing gate
- Air line to platform
- Platform rail pinch guard
- Platform work lights
- Hostile environment packages
- Tool tray
- Driving lights

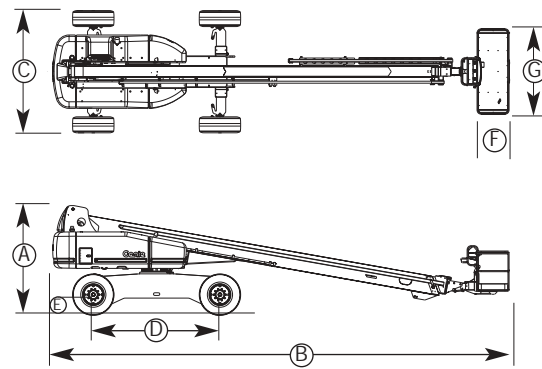
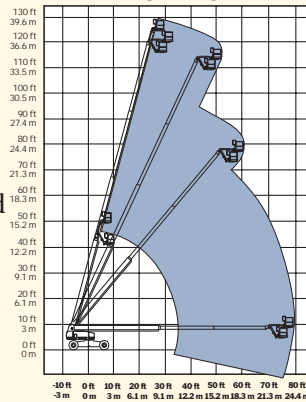
Standards Compliance

- CE EN280

Range of Motion
S-120



S-125



Specifications

Model	S-120		S-125	
	Metric	US	Metric	US
Working height*	38.6 m	126 ft	40.1 m	131 ft
Platform height	36.6 m	120 ft	38.1 m	125 ft
Ⓐ Height - stowed	3.07 m	10 ft 1 in	3.07 m	10 ft 1 in
Ⓑ Length - stowed	13 m	42 ft 8 in	14.02 m	46 ft
Length - transport (jib tucked underneath)	12.17 m	39 ft 11 in	12.17 m	39 ft 11 in
Ⓒ Width axles retracted	2.49 m	8 ft 2 in	2.49 m	8 ft 2 in
Width axles extended	3.35 m	11 ft	3.35 m	11 ft
Ⓓ Wheelbase	3.66 m	12 ft	3.66 m	12 ft
Ⓔ Ground clearance	40 cm	15 7/8 in	40 cm	15 7/8 in
Ⓕ Platform length	91 cm	36 in	91 cm	36 in
Ⓖ Platform width	2.44 m	96 in	2.44 m	96 in
Horizontal reach max.	22.9 m	75 ft	24.4 m	80 ft
Lift capacity	340 kg	750 lb	227 kg	500 lb
Turning radius - outside retracted axles	7.4 m	24 ft 4 in	7.4 m	24 ft 4 in
Turntable rotation	360° continuous		360° continuous	
Turntable tailswing retracted axles	1.68 m	5 ft 6 in	1.68 m	5 ft 6 in
Power source	Cummins 4B3.9 diesel 56 kw (75 hp) Deutz FL913 diesel 57 kw (77 hp) Perkins 1004-42 diesel 60 kw (81 hp)			
Controls	proportional			
Platform rotation	160° hydraulic		160° hydraulic	
Auxiliary power unit	12V DC			
Tyres	18 x 22.5, 18 pr, FF			
Hydraulic tank capacity	208 litre	55 gal	208 litre	55 gal
Fuel tank capacity	151 litre	40 gal	151 litre	40 gal
Drive speed, stowed	4.8 km/h	3 mph	4.8 km/h	3 mph
Gradeability, stowed	40%			
Weight**	20,112 kg	44,340 lb	20,248 kg	44,640 lb

* The metric equivalent of working height adds 2 m to platform height. U.S. adds 6 ft to platform height.
** Weight will vary depending on options and/or country standards.

Distributed By:

Genie Industries

GENIE EUROPE
The Maltings, Wharf Road
Grantham
Lincolnshire NG31 6BH
England
Telephone: +44 (0)1476 584333
Fax: +44 (0)1476 584334
http://www.genieindustries.com

GENIE UNITED STATES
18340 NE 76th Street
P.O. Box 97030
Redmond, Washington 98073-9730
Telephone +1 (425) 881 1800
Fax +1 (425) 88-475
http://www.genieindustries.com